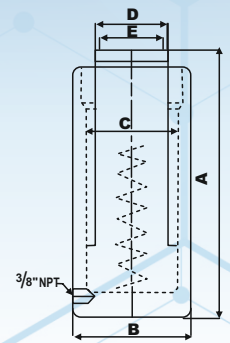
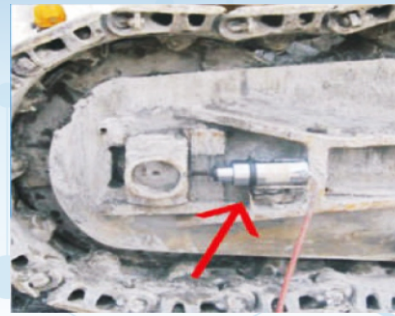
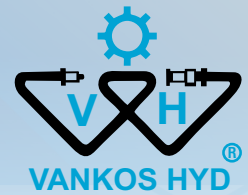


EXP SERIES (PLAIN RAM) GENERAL PURPOSE JACK



FEATURES / APPLICATION

- Gland Nut designed to withstand dead end load.
- Wiper seal, Hardened saddle is standard in all EXP Models
- Compatible with all reputed brands pumping units.
- All exposed surface chrome plated for corrosion resistance
- Single Acting Spring Return Upto 500 Tons.
- Best used in Maintenance, fabrication, construction, heavy industries, power & process plants, shipyards.
- Used in horizontal and vertical directions.
- Refer to anatomy for all VANKOS-HYD jacks.

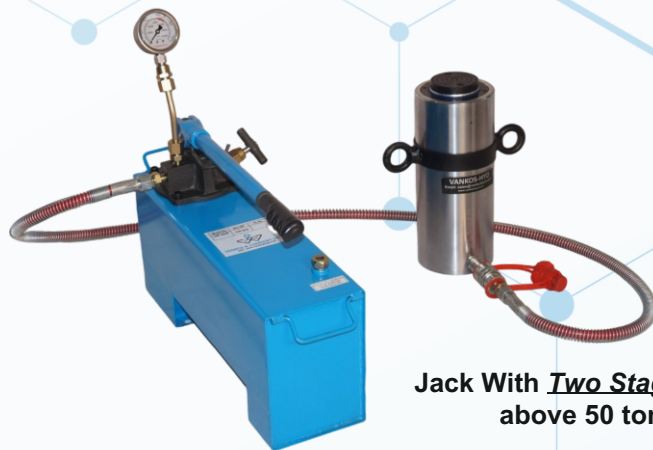
CAPACITY 5 - 400 TON | STROKE 50-200 MM | MAX. WORKING PRESSURE 700 BAR

Rated Capacity (Ton)	Stroke (mm)	Model	Effective Area (cm ²)	Oil cap (cc)	"A" Closed Height (mm)	"B" Cylinder OD (mm)	"C" Bore Dia (mm)	"D" Ram Dia (mm)	"E" Saddle Dia (mm)	Wt Approx (kg)
5	50	RC-EXP-5/50	8.0	40	135	45	32	25	25	1.5
5	100	RC-EXP-5/100	8.0	80	185	45	32	25	25	1.9
5	150	RC-EXP*5/150	8.0	121	235	45	32	25	25	2.4
10	50	RC-EXP-10/50	15.9	80	135	60	45	35	35	2.5
10	100	RC-EXP-10/100	15.9	159	185	60	45	35	35	3.2
10	150	RC-EXP-10/150	15.9	239	235	60	45	35	35	4
15	50	RC-EXP-15/50	23.8	119	140	70	55	45	43	4.1
15	100	RC-EXP-15/100	23.8	238	190	70	55	45	43	5.2
15	150	RC-EXP-15/150	23.8	356	240	70	55	45	43	6.3
15	200	RC-EXP-15/200	23.6	475	290	70	55	45	43	7.4
20	50	RC-EXP-20/50	31.2	156	145	80	63	50	48	5.3
20	100	RC-EXP-20/100	31.2	312	195	80	63	50	48	6.7
20	150	RC-EXP-20/150	31.2	468	245	80	63	50	48	8.1
20	200	RC-EXP-20/200	31.2	623	295	80	63	50	48	9.5
25	50	RC-EXP-25/50	38.5	192	155	90	70	55	53	7.2
25	100	RC-EXP-25/100	38.5	385	205	90	70	55	53	9.0
25	150	RC-EXP-25/150	38.5	577	255	90	70	55	53	10.8
25	200	RC-EXP-25/200	38.5	770	305	90	70	55	53	12.6
30	50	RC-EXP-30/50	44.2	221	160	100	75	60	58	9
30	100	RC-EXP-30/100	44.2	442	210	100	75	60	58	11.3
30	150	RC-EXP-30/150	44.2	442	260	150	75	60	58	11.3
30	200	RC-EXP-30/200	44.2	884	310	100	75	60	58	15.8
50	50	RC-EXP-50/50	78.5	393	175	130	100	80	78	16.5
50	100	RC-EXP-50/100	78.5	785	225	130	100	80	78	20.5
50	150	RC-EXP-50/150	78.5	1178	275	130	100	80	78	24.5
50	200	RC-EXP-50/200	78.5	1571	325	130	100	80	78	28.5
75	50	RC-EXP-75/50	113.1	565	180	155	120	95	93	24
75	100	RC-EXP-75/100	113.1	1131	230	155	120	95	93	29.5
75	150	RC-EXP-75/150	113.1	1696	280	155	120	95	93	35
75	200	RC-EXP-75/200	113.1	2262	330	155	120	95	93	41

Rated Capacity (Ton)	Stroke (mm)	Model	Effective Area (cm ²)	Oil cap (cc)	'A' Closed Height (mm)	'B' Cylinder OD (mm)	'C' Bore Dia (mm)	'D' Ram Dia (mm)	'E' Saddle Dia (mm)	Wt Approx (kg)
100	100	RC-EXP-100/100	153.9	1539	235	180	140	110	108	40.5
100	150	RC-EXP-100/150	153.9	2309	285	180	140	110	108	48
100	150	RC-EXP-100/50	153.9	770	185	180	140	110	108	33
100	200	RC-EXP-100/200	153.9	3079	335	180	140	110	108	55.5
150	50	RC-EXP-150/50	227.0	1135	200	220	170	140	138	54
150	150	RC-EXP-150/150	227.0	3405	300	220	170	140	138	77
200	50	RC-EXP-200/50	314.2	1571	215	255	200	160	158	76
200	100	RC-EXP-200/100	314.2	3142	265	255	200	160	158	91
200	150	RC-EXP-200/150	314.2	4712	315	255	200	160	158	106.5
250	100	RC-EXP-250/100	380.1	3801	270	280	220	180	177	114
250	150	RC-EXP-250/150	380.1	5702	320	280	220	180	177	133
250	200	RC-EXP-250/200	380.1	7603	370	280	220	180	177	152
300	100	RC-EXP-300/100	452.4	4524	285	310	240	200	196	149
300	150	RC-EXP-300/150	452.4	6786	335	310	240	200	196	173
300	200	RC-EXP-300/200	452.4	9048	385	310	240	200	196	197
400	150	RC-EXP-400/150	572.6	8588	365	350	270	220	216	239
400	200	RC-EXP-400/200	572.6	11451	415	350	270	220	216	269



Jack With Single Stage Pump
Upto 40 Tons



Jack With Two Stage Pump
above 50 tons



Power Pack for Higher Capacity
Jacks and Continues Operation

Optional Features & Accessories

- Tilt Saddle
- Black Nitriding for Extreme Environment



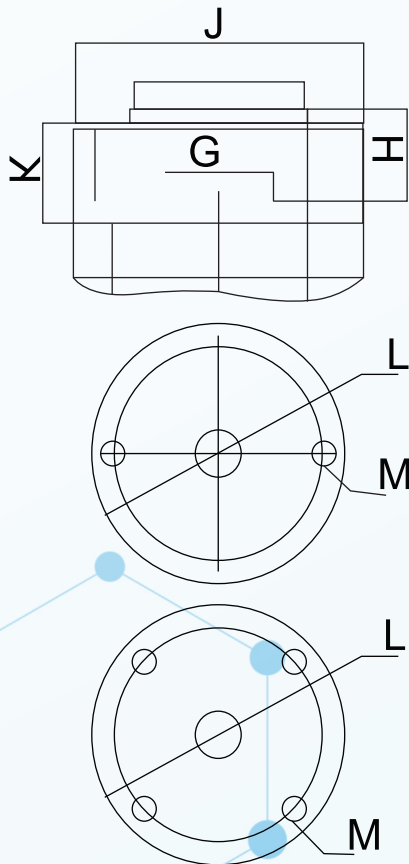
Customised
Telescopic Jack

- Higher capacity and customized solutions on request.
- Specifications are subject to change due to continual improvement.
- Capacity and stroke specified are maximum safe limits.
- Use at 80% of rating as safe practice.



EXPT Series-“T” Collar Threads with Base Mounting Holes

Mounting Details EXPT Series in mm							
Model	G Ram Internal Threads	H Thread Depth	J Coller Threads	K Length	L PCD x No. of Holes	M Bottom Tap Size	N Tap Thread Depth
EXPT - 5	M16x2P	15	M45x2P	25	25X2	M6	12
EXPT - 10	M22x2P	17	M60x2P	30	40X2	M8	12
EXPT -15	M22x2P	20	M70x2P	30	45X2	M8	12
EXPT -20	M24x2P	25	M80x2P	35	55X2	M8	12
EXPT -25	M24x2P	25	M90x2P	40	60X2	M10	16
EXPT -30	M30x2P	25	M100x3P	40	65X2	M10	16
EXPT -50	M42x2P	25	M130x3P	40	90X2	M10	16
EXPT -75	M48x2P	25	M155x3P	40	110X2	M10	16
EXPT -100	M48x2P	25	M180x3P	40	125X4	M12	16
EXPT -150	M82x2P	25	M220x3P	50	150X4	M16	18
EXPT - 200	M90x2P	25	M255x4P	50	180X4	M16	22



Bottom View



BL(Model)



****All Specifications of standard EXP jacks**

