



S25

2000W
S25 COMPACT CALIBRATA



 **waltvoil**
HYDRAULIC SYSTEMS

Features

- 100% digital processing to improve the clearness and brightness of your images with built-in image
- 100% auto & manual control that lets you choose which lens or zoom setting you want
- Double exposure & time-lapse
- Optical viewfinder
- 4.3" LCD color display with panoramic view
- Double optical zoom (3x optical, 6x electronic) with zoom-in for better close-up photography
- Zoom (Photo, Video) independently adjust

Key Specifications

The camera does not meet specific performance requirements of the following standards: **ISO 9001** and **ISO 14001** standards.

Resolution		1920 x 1080	
Zoom lens (mm)	Optical zoom	3x (30-90)	40x (30-1200)
	Electronic	6x (30-180)	64x (30-1920)
Zoom range (mm)	3x optical and 7x	30-180	300-2100
Viewfinder (mm)	Optical viewfinder with 21x optical zoom (30-630)	30-180	300-2100
Viewfinder		LCD (3.0")	
Viewfinder	with 100% zoom (30-300)	30-300	300-3000
	with 40x zoom (30-1200)	30-1200	300-12000
Sensor	1/2.3" CMOS	16.1 MP (4128 x 3096)	16.1 MP (4128 x 3096)
	CMOS	12.1 MP (3840 x 2880)	12.1 MP
	1/3"	4.1 MP (2592 x 1944)	4.1 MP
Max. resolution		1920 x 1080 (Full HD)	
Video resolution		1080i (1080 x 600)	

© 2014. All rights reserved. Please refer to the User Guide.

Warranty Information

The camera is covered by a 1-year limited warranty. For more information, please refer to the camera's user manual.

Warranty

Warranty information for this product is available at www.woholl.com. Please refer to the camera's user manual for more information. Please refer to the camera's user manual for more information.

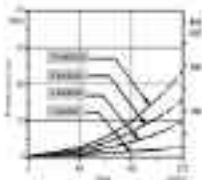
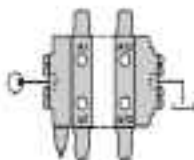
WARRANTY IS VOID IF THE PRODUCT IS NOT USED AS INTENDED OR IF THE PRODUCT IS NOT USED AS INTENDED.

© 2014. All rights reserved.
For more information, please refer to the camera's user manual.

Performance data [www.wahl.com](#)

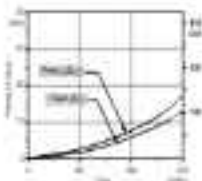
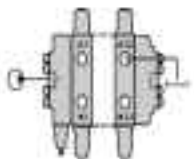
Open centre

From 2000 bar (29000 psi) and above



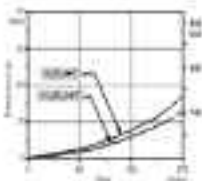
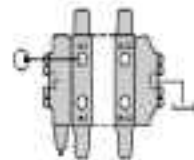
Over to work port

From 2000 bar (29000 psi) and above (with 2000 psi pressure)



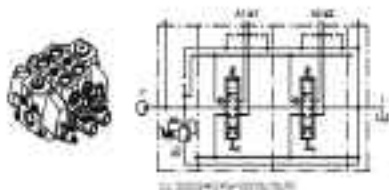
With port & outlet

From 2000 bar (29000 psi) and above (with 2000 psi pressure)

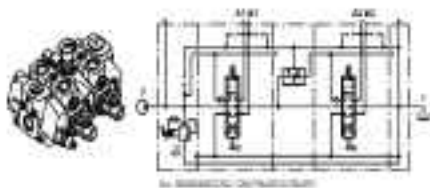


SD25 - Hydraulic cylinder

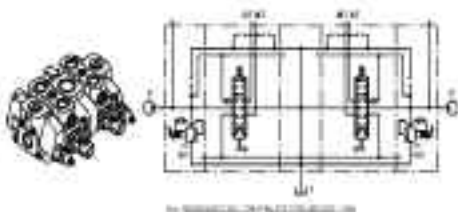
2 parallel working sections



Maintained pressure compensated flow divider section



2 flow control and two flow maintain sections

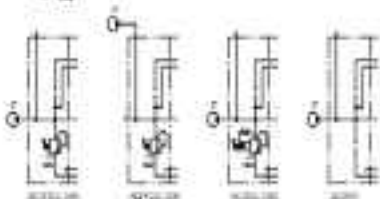


Hydraulic circuit

HMC cover



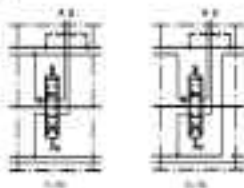
TYP	CODE	DESCRIPTION
4022	4110111	Cap screw 10x10mm with lock
4022	4110112	Cap screw 10x10mm with lock
4022	4110111	Cap screw 10x10mm with lock
4022	4110111	Cap screw 10x10mm with lock
4022	4110111	Cap screw 10x10mm with lock
4022	4110111	Cap screw 10x10mm with lock



Working sections



TYP	CODE	DESCRIPTION
4022	4110111	Cap screw 10x10mm with lock
4022	4110111	Cap screw 10x10mm with lock
4022	4110111	Cap screw 10x10mm with lock



A

A

Intermediate sections



Type	Code	Description
01	010000	100 mm x 100 mm
02	010001	100 mm x 100 mm
03	010002	100 mm x 100 mm
04	010003	100 mm x 100 mm
05	010004	100 mm x 100 mm
06	010005	100 mm x 100 mm
07	010006	100 mm x 100 mm
08	010007	100 mm x 100 mm
09	010008	100 mm x 100 mm
10	010009	100 mm x 100 mm
11	010010	100 mm x 100 mm
12	010011	100 mm x 100 mm
13	010012	100 mm x 100 mm
14	010013	100 mm x 100 mm
15	010014	100 mm x 100 mm
16	010015	100 mm x 100 mm
17	010016	100 mm x 100 mm
18	010017	100 mm x 100 mm
19	010018	100 mm x 100 mm
20	010019	100 mm x 100 mm
21	010020	100 mm x 100 mm
22	010021	100 mm x 100 mm
23	010022	100 mm x 100 mm
24	010023	100 mm x 100 mm
25	010024	100 mm x 100 mm
26	010025	100 mm x 100 mm
27	010026	100 mm x 100 mm
28	010027	100 mm x 100 mm
29	010028	100 mm x 100 mm
30	010029	100 mm x 100 mm
31	010030	100 mm x 100 mm
32	010031	100 mm x 100 mm
33	010032	100 mm x 100 mm
34	010033	100 mm x 100 mm
35	010034	100 mm x 100 mm
36	010035	100 mm x 100 mm
37	010036	100 mm x 100 mm
38	010037	100 mm x 100 mm
39	010038	100 mm x 100 mm
40	010039	100 mm x 100 mm
41	010040	100 mm x 100 mm
42	010041	100 mm x 100 mm
43	010042	100 mm x 100 mm
44	010043	100 mm x 100 mm
45	010044	100 mm x 100 mm
46	010045	100 mm x 100 mm
47	010046	100 mm x 100 mm
48	010047	100 mm x 100 mm
49	010048	100 mm x 100 mm
50	010049	100 mm x 100 mm
51	010050	100 mm x 100 mm
52	010051	100 mm x 100 mm
53	010052	100 mm x 100 mm
54	010053	100 mm x 100 mm
55	010054	100 mm x 100 mm
56	010055	100 mm x 100 mm
57	010056	100 mm x 100 mm
58	010057	100 mm x 100 mm
59	010058	100 mm x 100 mm
60	010059	100 mm x 100 mm
61	010060	100 mm x 100 mm
62	010061	100 mm x 100 mm
63	010062	100 mm x 100 mm
64	010063	100 mm x 100 mm
65	010064	100 mm x 100 mm
66	010065	100 mm x 100 mm
67	010066	100 mm x 100 mm
68	010067	100 mm x 100 mm
69	010068	100 mm x 100 mm
70	010069	100 mm x 100 mm
71	010070	100 mm x 100 mm
72	010071	100 mm x 100 mm
73	010072	100 mm x 100 mm
74	010073	100 mm x 100 mm
75	010074	100 mm x 100 mm
76	010075	100 mm x 100 mm
77	010076	100 mm x 100 mm
78	010077	100 mm x 100 mm
79	010078	100 mm x 100 mm
80	010079	100 mm x 100 mm
81	010080	100 mm x 100 mm
82	010081	100 mm x 100 mm
83	010082	100 mm x 100 mm
84	010083	100 mm x 100 mm
85	010084	100 mm x 100 mm
86	010085	100 mm x 100 mm
87	010086	100 mm x 100 mm
88	010087	100 mm x 100 mm
89	010088	100 mm x 100 mm
90	010089	100 mm x 100 mm
91	010090	100 mm x 100 mm
92	010091	100 mm x 100 mm
93	010092	100 mm x 100 mm
94	010093	100 mm x 100 mm
95	010094	100 mm x 100 mm
96	010095	100 mm x 100 mm
97	010096	100 mm x 100 mm
98	010097	100 mm x 100 mm
99	010098	100 mm x 100 mm
100	010099	100 mm x 100 mm



Hydraulic oval



Type	Code	Description
01	010000	100 mm x 100 mm
02	010001	100 mm x 100 mm
03	010002	100 mm x 100 mm
04	010003	100 mm x 100 mm
05	010004	100 mm x 100 mm
06	010005	100 mm x 100 mm



0100 - Hydraulic oval (100 mm x 100 mm)

Assembly path

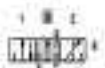
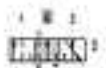


Part No.	Description
1	Timing belt
2	Timing pulley
3	Timing pulley
4	Timing pulley
5	Timing pulley
6	Timing pulley
7	Timing pulley
8	Timing pulley
9	Timing pulley
10	Timing pulley
11	Timing pulley
12	Timing pulley
13	Timing pulley
14	Timing pulley
15	Timing pulley
16	Timing pulley
17	Timing pulley
18	Timing pulley
19	Timing pulley
20	Timing pulley
21	Timing pulley
22	Timing pulley
23	Timing pulley
24	Timing pulley
25	Timing pulley
26	Timing pulley
27	Timing pulley
28	Timing pulley
29	Timing pulley
30	Timing pulley
31	Timing pulley
32	Timing pulley
33	Timing pulley
34	Timing pulley
35	Timing pulley
36	Timing pulley
37	Timing pulley
38	Timing pulley
39	Timing pulley
40	Timing pulley
41	Timing pulley
42	Timing pulley
43	Timing pulley
44	Timing pulley
45	Timing pulley
46	Timing pulley
47	Timing pulley
48	Timing pulley
49	Timing pulley
50	Timing pulley
51	Timing pulley
52	Timing pulley
53	Timing pulley
54	Timing pulley
55	Timing pulley
56	Timing pulley
57	Timing pulley
58	Timing pulley
59	Timing pulley
60	Timing pulley
61	Timing pulley
62	Timing pulley
63	Timing pulley
64	Timing pulley
65	Timing pulley
66	Timing pulley
67	Timing pulley
68	Timing pulley
69	Timing pulley
70	Timing pulley
71	Timing pulley
72	Timing pulley
73	Timing pulley
74	Timing pulley
75	Timing pulley
76	Timing pulley
77	Timing pulley
78	Timing pulley
79	Timing pulley
80	Timing pulley
81	Timing pulley
82	Timing pulley
83	Timing pulley
84	Timing pulley
85	Timing pulley
86	Timing pulley
87	Timing pulley
88	Timing pulley
89	Timing pulley
90	Timing pulley
91	Timing pulley
92	Timing pulley
93	Timing pulley
94	Timing pulley
95	Timing pulley
96	Timing pulley
97	Timing pulley
98	Timing pulley
99	Timing pulley
100	Timing pulley

For more information, visit www.wahl.com

2. www.wahl.com

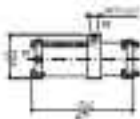
span options



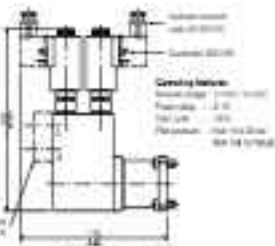
Virtuelle

Virtuelle

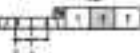
3A' stile spina posizione



Cavità laterale

Virtuale (1) per
virtuale (2) per
virtuale (3) per

Cavità laterale

Virtuale (1) per
virtuale (2) per
virtuale (3) per

Cavità laterale

Virtuale (1) per
virtuale (2) per
virtuale (3) per

Hydro-hydraulic Valve 40



Part	Code	Qty	Description
1	4204	1	Body
	4204	1	Body
	4204	1	Body
	4204	1	Body
	4204	1	Body
	4204	1	Body
2	90	1	Seal kit
3		1	Seal kit
4	02	1	Spring

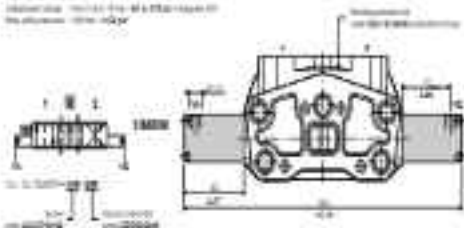
NOTE: Check seal kit in 4204 manual

Special configurations

Hydraulic spool control

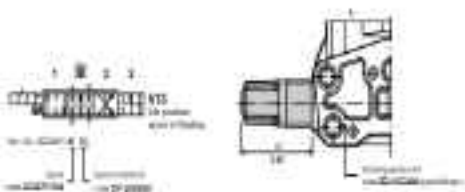
Operating features

Maximum flow: 100 l/min (26.4 gpm) @ 210 bar (3045 psi)
 Max. pressure: 210 bar (3045 psi)

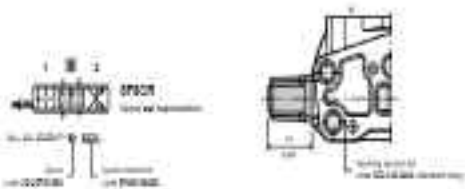
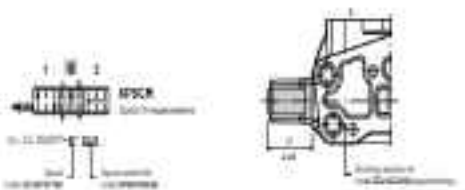


Special configurations

4th position fixing strut



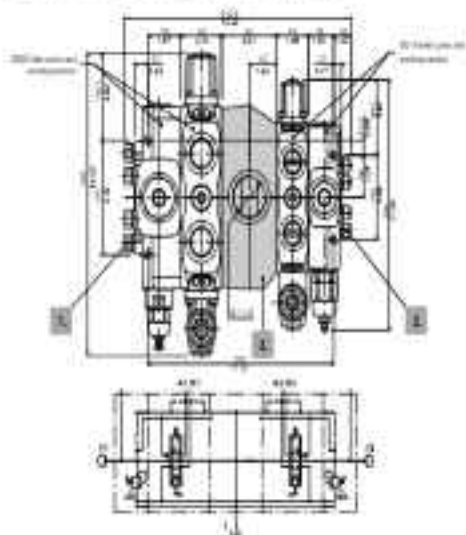
Regenerative strut



C30

Wolvo engine

11 cylinder diesel engine with 16 valves with 4 valves/cylinder (SD25/SD25)



Dimensions in mm (inch) - conversion factor 25.4 (1000)

1. Torque table for SD25

1200	80 (57.4) Nm
1250	85 (62.1) Nm
1300	90 (66.1) Nm
1350	95 (69.5) Nm
1400	100 (73.5) Nm

2. Torque table for SD16

1200	20 (14.7) Nm
1250	21 (15.5) Nm
1300	22 (16.2) Nm
1350	23 (17.0) Nm
1400	24 (17.7) Nm

3. Intermediate sections*

1200	80 (57.4) Nm
1250	85 (62.1) Nm

W3177 - Care and maintenance 807 1000

Outlet cover options

Example

FA 8025 (RC +)



Outlet socket parts

Part	Code	Qty	Description
1.	000000	1	Outlet socket*
2.	000000	1	RC+†

Outlet option

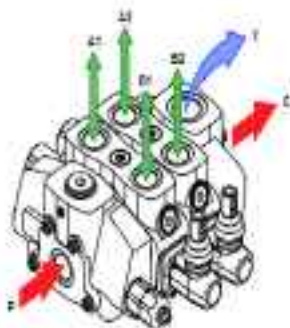
Part	Code	Qty	Description
1.	000000	1	Outlet socket
			RC+†
			RC+†

Installation and Commissioning

The 5025 series excavator are rated as per the technical specifications of the engine.

Check the following information for operation, from the engine manufacturer.

- Be aware of the location of the engine, to allow for convenient access to the engine and also adequate air flow to the engine.
- A suitable exhaust facility must be provided for the engine. Do not use an exhaust downlead to the rear.
- Check parking brake system and engine lights are on.



Engine configuration

Filling Requirements Table - 5025 Series

5025 P114	F and C ports	H and B ports	F port
5025 (5025)	1 (1)	1 (1)	1 (1)
5025 (5025)	1 (1)	1 (1)	1 (1)
5025 (5025)	1 (1)	1 (1)	1 (1)
5025 (5025)	1 (1)	1 (1)	1 (1)
5025 (5025)	1 (1)	1 (1)	1 (1)
5025 (5025)	1 (1)	1 (1)	1 (1)
5025 (5025)	1 (1)	1 (1)	1 (1)

NOTE - These figures are approximate. Specific requirements should be checked against the manufacturer's manual and specifications. The manufacturer must be contacted.

Index

See full name search guide with the most general term with 100% alignment.

Access to publications: <http://dx.doi.org/10.1002/9781118111111.ch10>

<http://onlinelibrary.wiley.com/doi/10.1002/9781118111111.ch10>

WILEY-INTERSCIENCE DISCOVER SOMETHING GREAT

<http://www.interscience.wiley.com>



1995-1996

1997-1998

1999-2000

2001-2002

2003-2004

2005-2006

2007-2008