



A Polyhydron Group Company

# HAND PUMP WITH ROTARY DIRECTIONAL CONTROL VALVE Model : HP\*-D

Ref. No. D 10180  
Release 12 / 2025

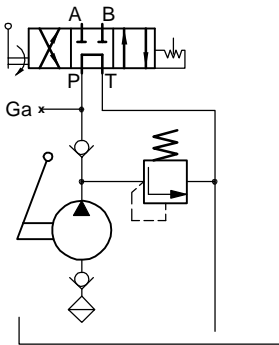
ENGINEERING - 1 of 2

## Description

Hand pump model HP12-D and HP16-D are compact heavy-duty pumps, designed for operating Double acting cylinders of equipment like small presses, hydraulically actuated fixtures and tools used in emergency operations. The Rotary Directional Control valve has pressure holding Capability.

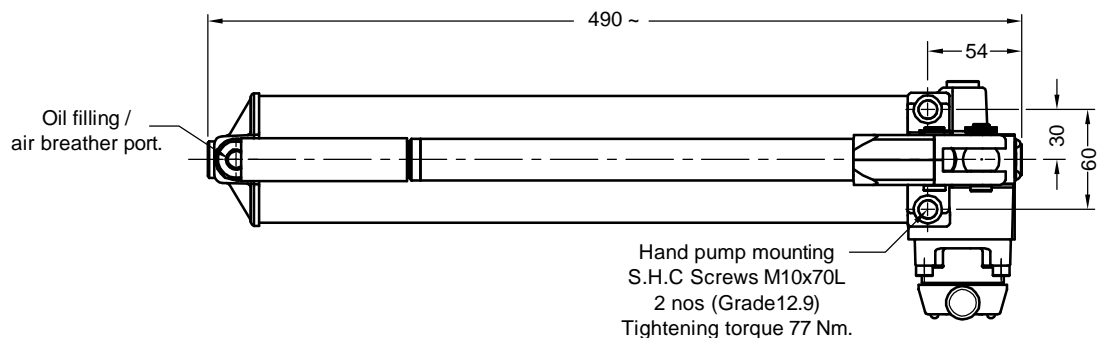
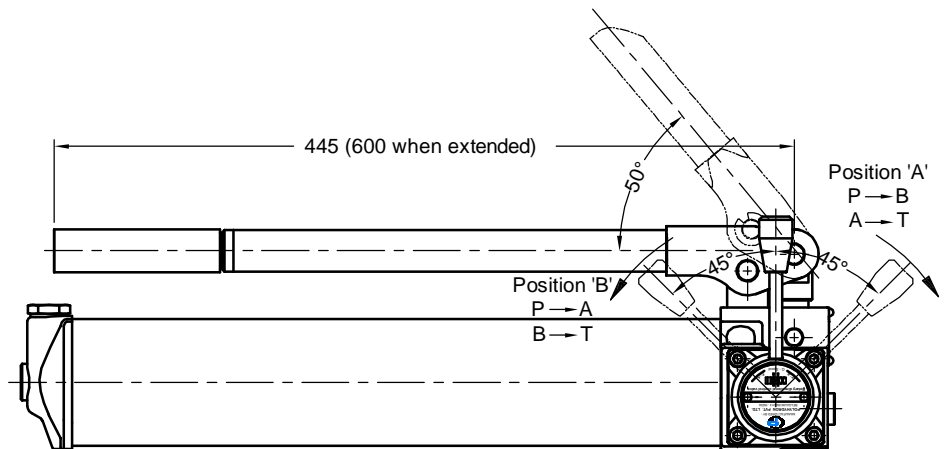
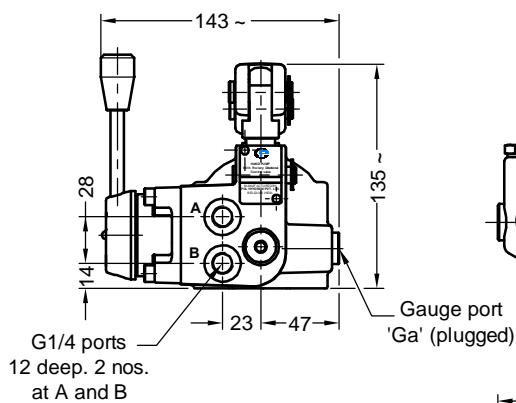
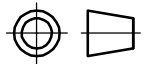


## Hydraulic symbol



## Unit dimensions

Dimensions in mm.





### Technical specifications

Construction	:	Sealed piston with seated suction and delivery valves and a Rotary Directional Control valve.
Hydraulic medium	:	Mineral oil.
Maximum working pressure	:	Refer table no.1
Displacement	:	Refer table no.1
Oil tank capacity	:	1.22 L
Oil tank displacement	:	0.8 L
Force required at the end of the pump hand lever at max. pressure (Approx)	:	Refer table no.1
Viscosity range	:	10 cSt to 380 cSt
Fluid temperature range	:	-20°C to +70°C
Fluid cleanliness requirement	:	ISO 4406 20/18/15 or better.
Mass (Approx)	:	Without Oil - 9 kg.

Table no. 1

Specification	Unit	HP12-D	HP16-D
Max. Working Pr.	bar	500	350
Displacement Capacity	cm <sup>3</sup> /stroke	2.8	5
Approx. hand force required at rated pressure, when the hand lever is fully extended.	N	270	340

Note : Torque required to operate the lever of Rotary DCV under pressure is approximately 14 Nm at 500 bar.

### Ordering code

