



PILOT OPTD. PRESSURE REDUCING VALVE MODULAR CONSTRUCTION

MPPM*06**01

Ref. No. D 09247
Release : 12 / 2026
ENGINEERING - 1 of 2

A Polyhydron Group Company

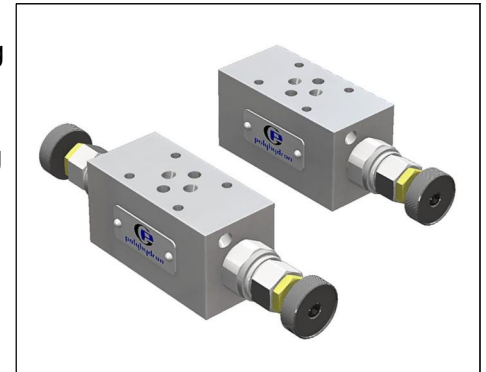
Description

Valve model MPPM*06 are Pilot operated pressure reducing valves, offering reduced pressure at it's out let port.

The pressure adjustment can be made by loosening the lock nut and turning the setting screw in clock wise direction to increase the pressure.

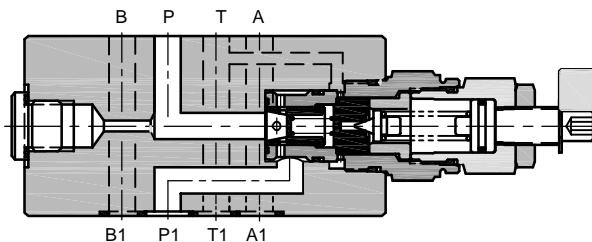
The interface conforms to ISO 4401 - AB - 03 - 04 - A,
IS 10187 , DIN 24340.

Available in four models.

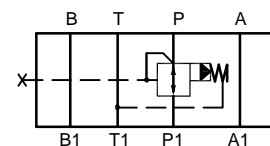


Section

Model : **MPPM * 06 P * 01**



Hydraulic symbol



Technical specifications

Construction	Pilot operted spool type.
Mounting / Standard	Conforming to ISO 4410 - AB - 03 - 4 - A.
Mounting position	Optional.
Flow direction	From P to A.
Direction of flow.....	As indicated by hydraulic symbol.
Max operating Pressure.....	315 bar for all ports.
Nominal flow handling capacity.....	30 lpm.
Hydraulic medium	Mineral oil.
Nominal leakage flow at 'T' port.....	0.4 l/min, when in operation.
Reverse flow	Possible *
	(* if pressure does not exceed 90% of the set pressure on the valve)
Viscosity range	10 cSt to 380 cSt
Fluid temperature range	-20°C to +80°C
Fluid cleanliness requirement	ISO 4406 20/18/15 or better.
Nominal flow handling capacity	30 lpm.
Weight (approx)	1.5 kg.

polyhydron pvt. ltd.

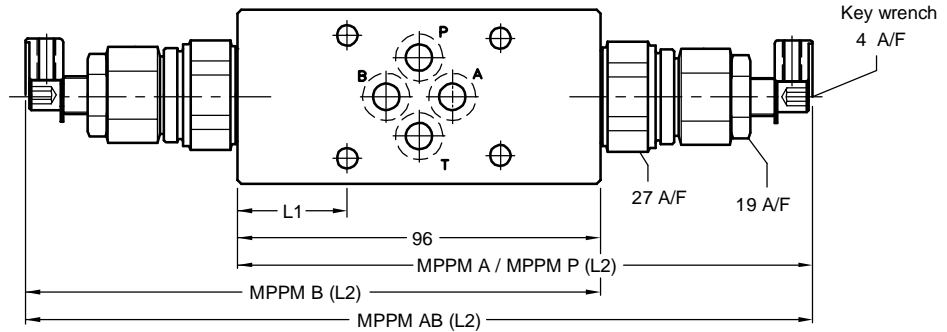
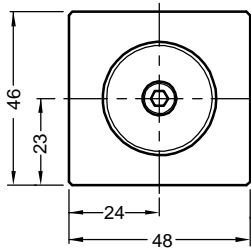
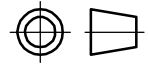
78-80, Machhe Industrial Estate,
Machhe, Belgaum - 590 014. INDIA.

Phone : +91-(0)831- 2411001
E-mail : sales@polyhydron.com
Website : www.polyhydron.com



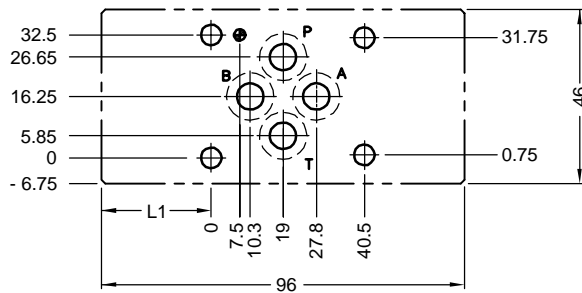
Unit dimensions

Dimensions in mm.



Model	L1	L2
MPPR AB	29	208
MPPR A	16	152
MPPR B	40	152
MPPR P	18	152

INTERFACE



Note

Interface surface roughness : **Ra** value should be equal to or better than 0.8 μm

Interface surface flatness : 0.01 - 100 mm.

Ordering code

MPPM S 06 AB 100 01

Modular construction
Pilot optd. pr. reducing valve.

Adjustable pr. with setscrew	S
Adjustable pr. with handknob	H

Size **06**

Design code subject to change.
Installation dimensions remain
same for design code thru
01 thru 09

Pr. Rating - **50,100,200 & 315**

For Modular construction only	
AB	reducing at A & B ports.
A	reducing at A port.
B	reducing at B port.
P	reducing at P port.