



# CHECK VALVE (ISO)

## Model : C\*S\*-\*

Ref. No. D 06199  
Release : 12 / 2025

ENGINEERING - 1 of 3

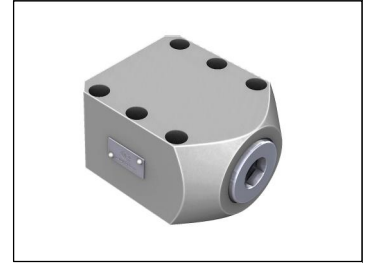
A Polyhydron Group Company

### Description

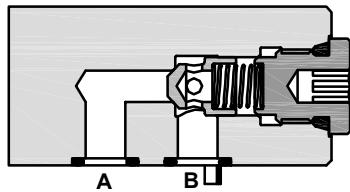
Check valve models C\*S\*-\* allow free flow in the direction from Port A to Port B and offer leak free closure in opposite direction.

Available in four sizes of standard interface conforming to ISO 5781, IS 10187 and DIN 24340.

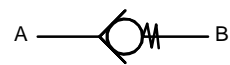
Five cracking pressures : 0, 0.5, 1.5, 3 and 5 bar.



### Section

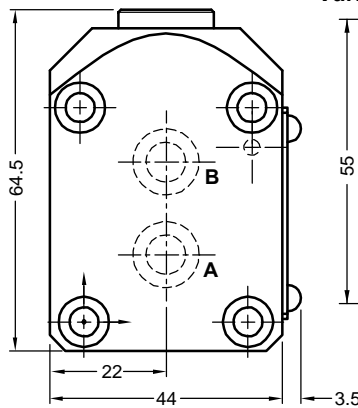
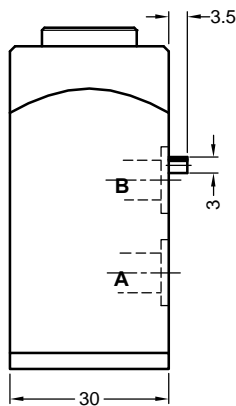


### Hydraulic symbol

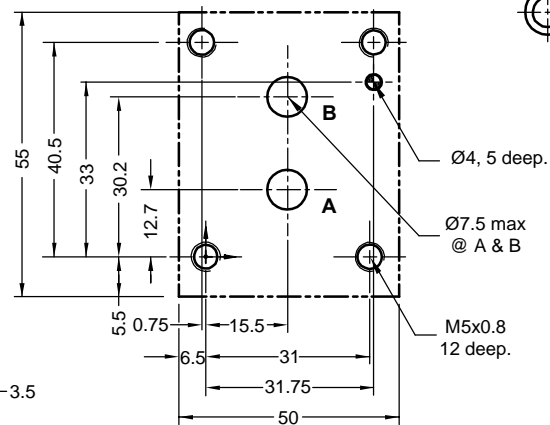


### Unit dimensions

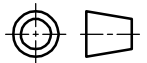
C06S\*-\*



Valve mounting interface as per ISO 5781.

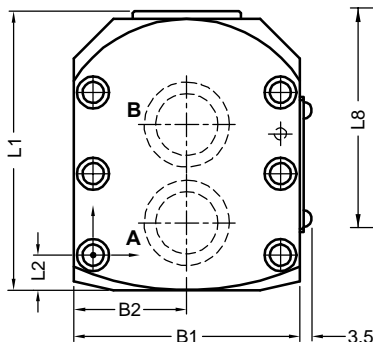
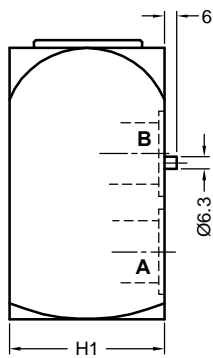


Dimensions in mm



Note: Valve fixing S.H.C Screws M5x35L are not in scope of supply. Tightening torque 9.5 Nm.

C10S\*-\*, C20S\*-\* and C30S\*-\*



Valve mounting interface as per ISO 5781.

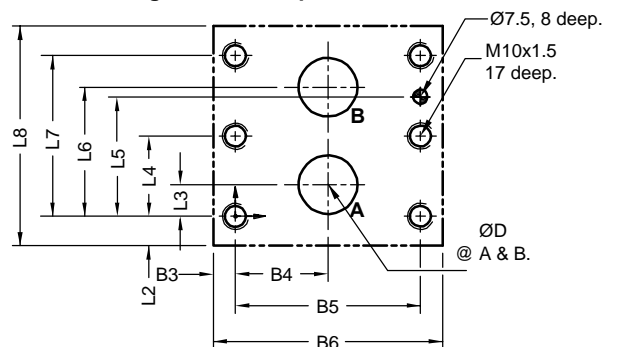


Table no. 1

Note: Valve fixing S.H.C Screws are not in scope of supply.

Size	L1	L2	L3	L4	L5	L6	L7	L8	B1	B2	B3	B4	B5	B6	H1	ØD max	Valve fixing S.H.C Screws Class 12.9	Tightening Torque Nm
10	82	10.5	7.1	---	31.8	35.7	42.9	80	88	44	9.2	33.3	66.7	85	40	14	M10 x 55L 4 nos	77
20	135	39.5	11.1	---	44.5	49.2	60.3	95	100	50	10.3	39.7	79.4	100	55	22	M10 x 70L 4 nos	
30	167.5	44.5	16.7	42.1	62.7	67.5	84.1	115	117	58.5	11.6	48.4	96.8	120	80	32	M10 x 70L 6 nos	

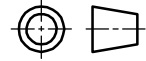


Unit dimensions

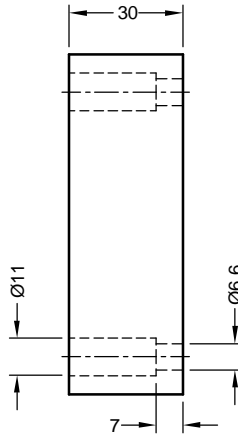
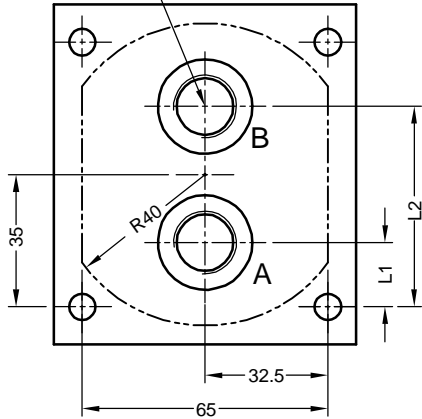
Subplate : Size 06

Subplate model : SP06G02

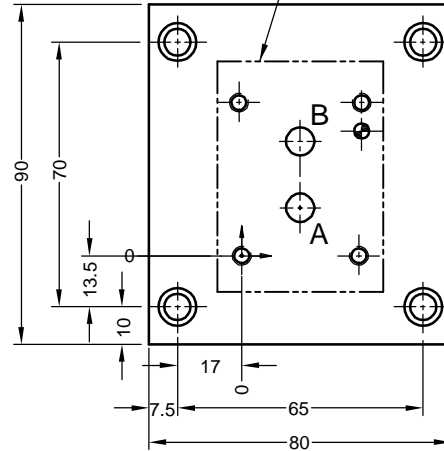
Dimensions in mm.



G1/4 tap, 12 deep.  
Ø22 S'face, 1 deep  
2 Nos.

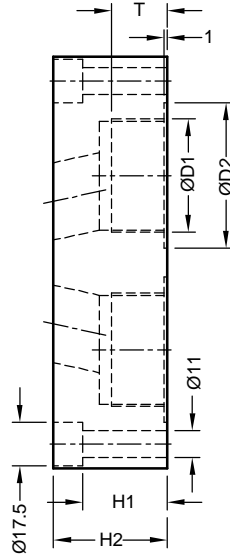
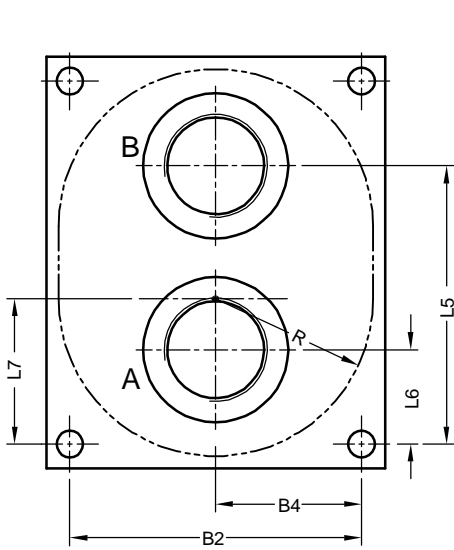


Refer page 1 for valve mounting interface details



Mass 1.7 kg.

Subplate : Size 10, 20 and 30



Refer page 1 for valve mounting interface details

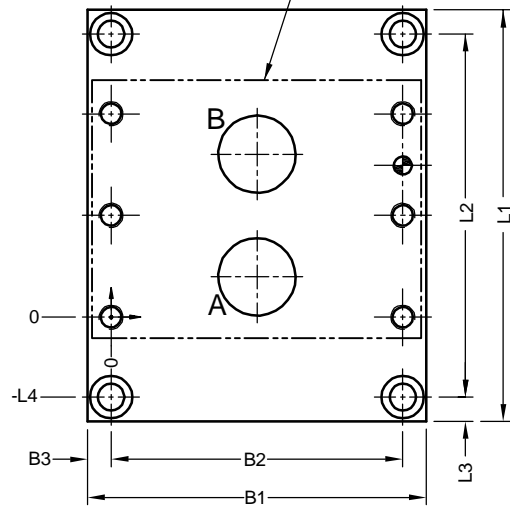


Table no. 2

Size	Subplate Model	Mass Kg.	ØD1	ØD2	B1	B2	B3	B4	L1	L2	L3	-L4	L5	L6	L7	H1	H2	R	T
10	SP06G04	2.5	G1/2	30	86	66.7	9.7	33.3	127	107	10	31.9	75	31	39	15	29	40	14
20	SP08G06	5.4	G3/4	36	112	79.4	16.3	39.7	136	104	16	22	77	27	47	25	45	52	16
	G1		44	82									22	18					
30	SP09G10	8.8	G1 1/4	54	140	96.8	21.6	48.4	170	150	10	33	111	39	60	35	47	65	20
	G1 1/2		60	115									33	22					

Note : Subplates to be ordered separately. Specify **Subplate model** while ordering.

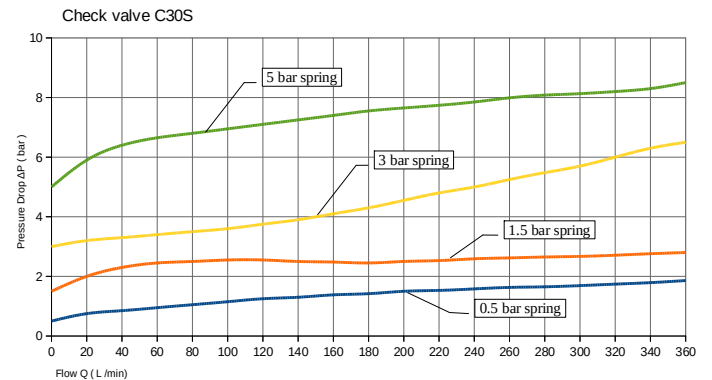
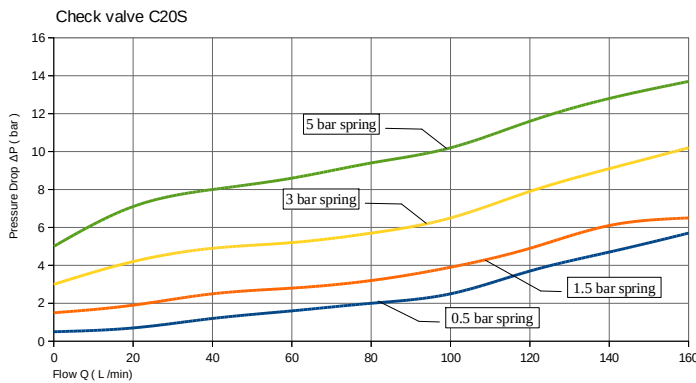
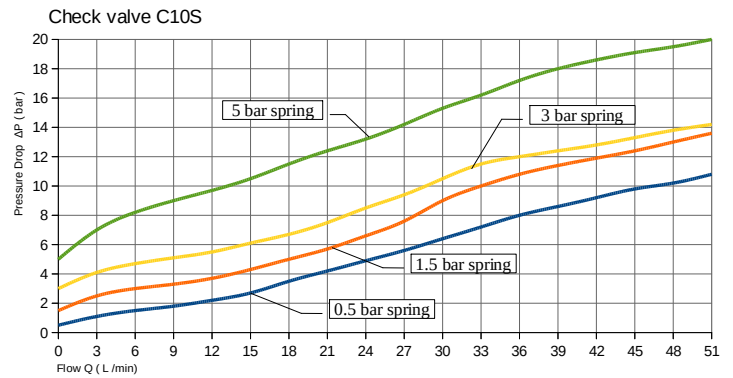
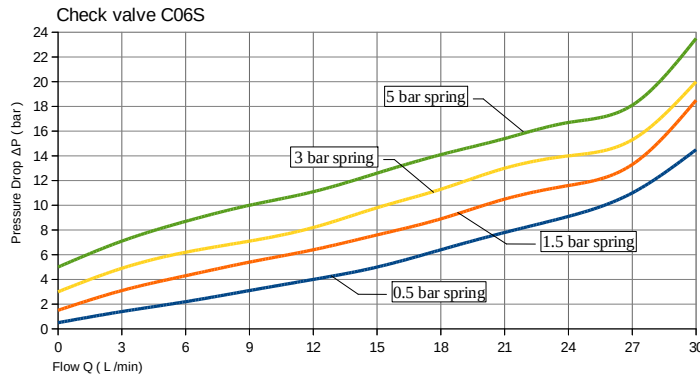


### Technical specifications

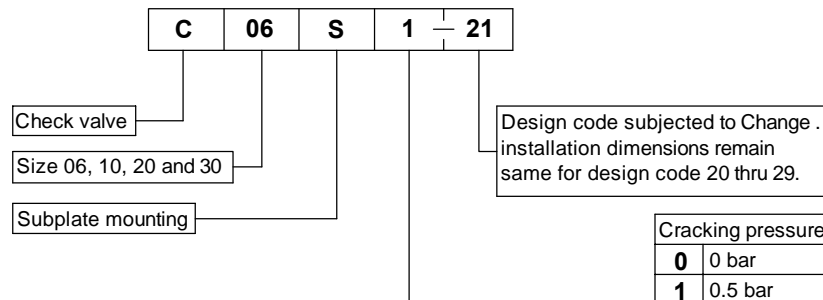
Construction	:	Seat type
Mounting style	:	Subplate type interface conforming to ISO 5781 , IS 10187 , DIN 24340.
Mounting position	:	Optional. ( For 0 bar cracking valves, it is recommended that the axis of the poppet in the valve in vertical direction, with its port A downwards ).
Flow direction	:	Free flow from A to B, Leakfree closure in opposite direction.
Cracking pressure	:	0.5, 1.5, 3 and 5 bar.
Working pressure	:	315 bar for Ports A and B.
Hydraulic medium	:	Mineral oil.
Temperature range	:	-20°C to + 80°C.
Viscosity range	:	10 cSt to 380 cSt.
Fluid cleanliness required	:	ISO 4406 20/18/15 or better.
Flow handling capacity	:	Refer graphs.
Valve Mass approx.	:	Model : 06 10 20 30 in Kg : 0.6 1.8 4.6 10.6

### Performance graphs

Oil used : ISO VG-46 at 40°C temperature. Flow from Port A to Port B



### Ordering code



Note : Subplate to be ordered separately.  
For subplate ordering code refer table no.2

All rights reserved.

Subject to change without prior notice.

Due to continuous improvement in the design of the product, the actual product supplied may look different than shown above.

For critical applications, please ask for certified installation drawing.