



PRESSURE CONTROL MODULE
PCM 20-16
Model : PCM20-16*****

Ref. No. D 04902
Release 01 / 2026
ENGINEERING - 1 of 3

A Polyhydon Group Company

Description :

Design to control double pumps of Hi-Low system.

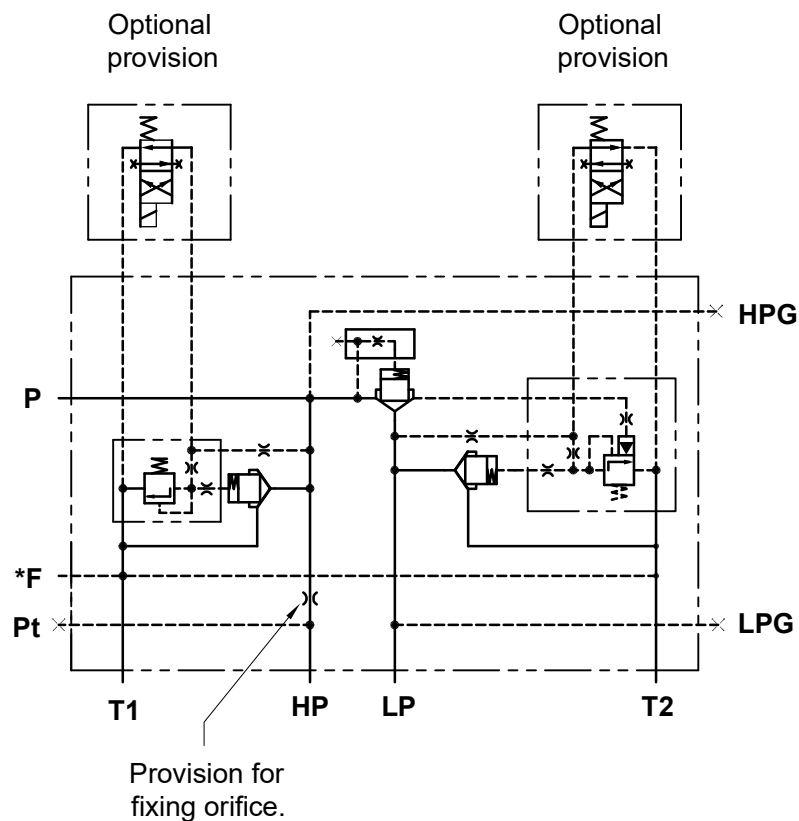
Unloads low pressure pump, when system pressure rises above the pressure set on Unloader valve.

Relieves high pressure pump, when system pressure reaches Relief valve set pressure.

Solenoid unloading facility available as an option.



Hydraulic symbol :



Connection Details :

HP	:	Inlet Port for high pressure pump
LP	:	Inlet Port for low pressure pump
P	:	Out-let port
HPG	:	Gauge port on high pressure pump line
LPG	:	Gauge port on low pressure pump line
Pt	:	Pilot pressure port (optional)
T1	:	Tank port of high Pressure Relief valve
T2	:	Tank port of low Pressure Unloading valve
F	:	Filter port connection optional (Combining T1 & T2)

polyhydon pvt. ltd.

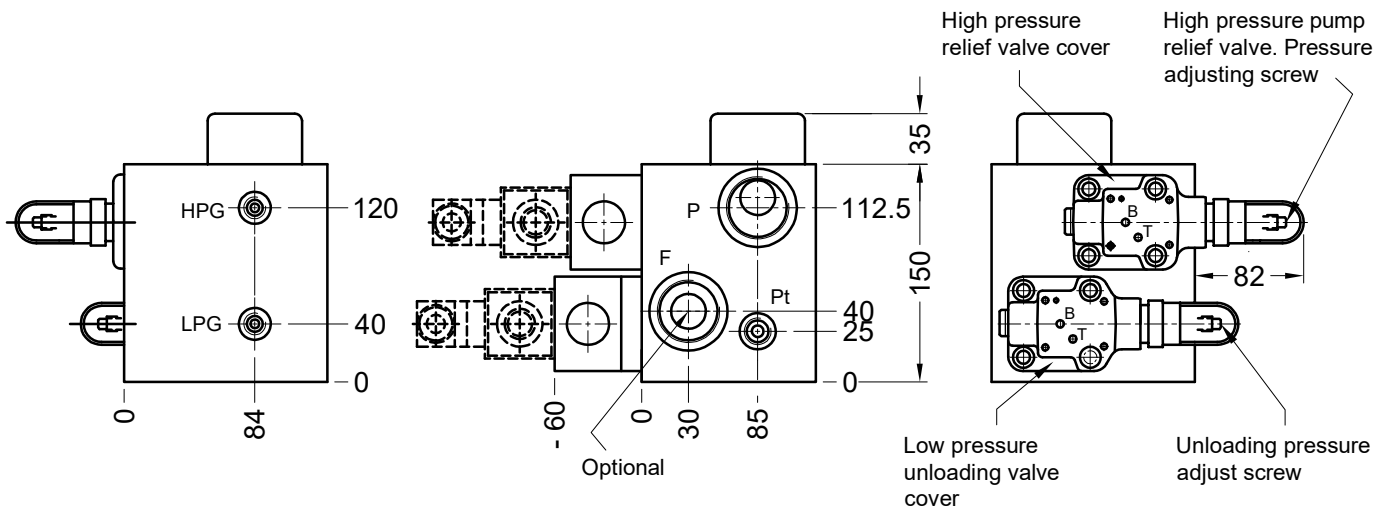
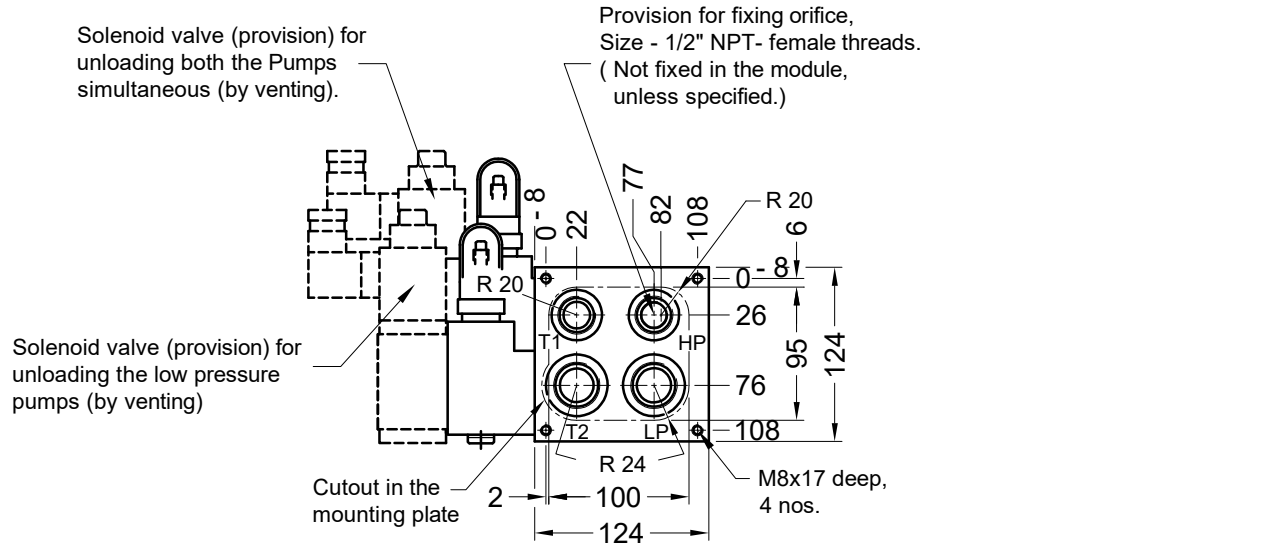
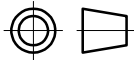
78-80, Machhe Industrial Estate,
Machhe, Belgaum - 590 014. INDIA.

Phone : +91-(0)831- 2411001
E-mail : sales@polyhydon.com
Website : www.polyhydon.com

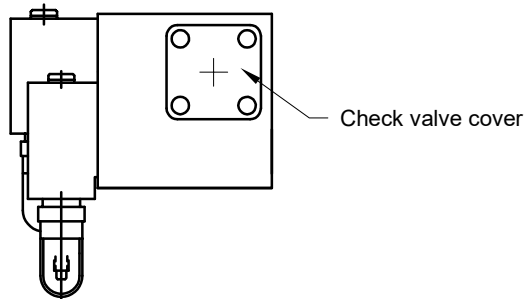


Unit dimensions :

Dimensions in mm.



Port details	
HP	-- G3/4
LP	-- G1
P	-- G1 - 1/4
Pt	-- G1/4
HPG	-- G1/4
LPG	-- G1/4
T1	-- G3/4
T2	-- G1
F	-- G1 - 1/4



Note : Optional Solenoid to be ordered separately.



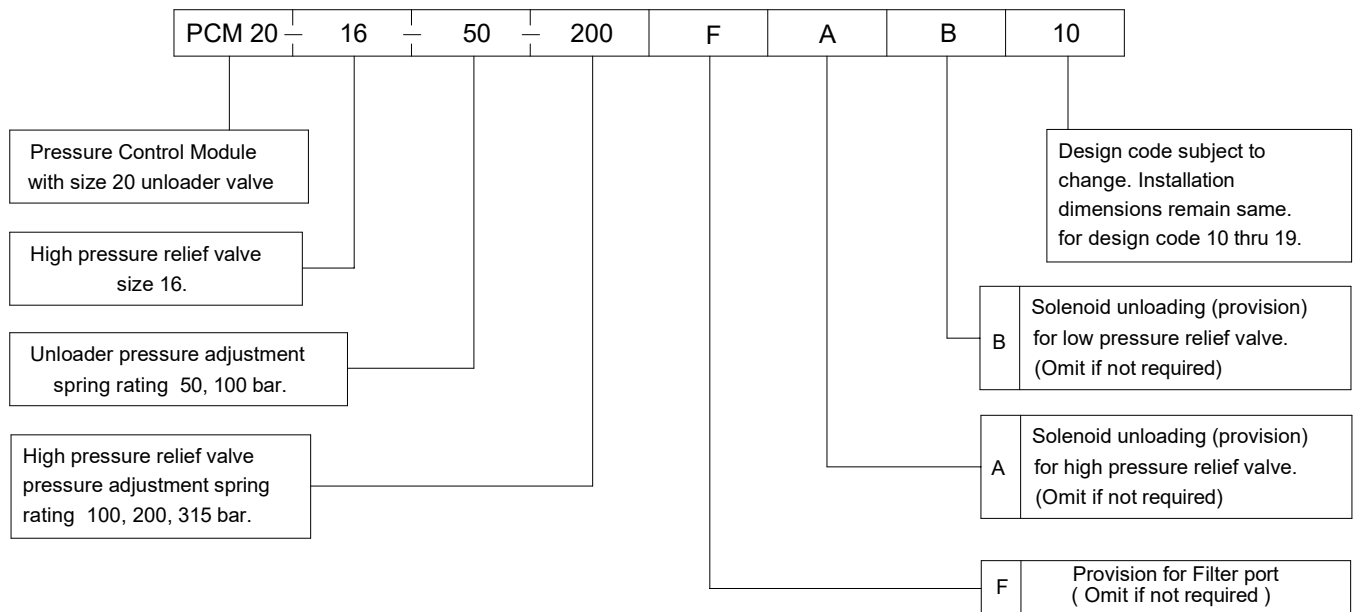
Technical specifications :

- Construction PCM 20-16 : Direct acting poppet type High Pr. Relief Valve
Two stage poppet type low pressure unloading valve.
- Mounting : Threaded body (Factory standard).
- Mounting position : Optional.
- Flow direction : As per Hydraulic Symbol.
- Operating pressure : For Low pressure pump50 and 100 bar.
For high pressure pump100, 200 and 315 bar.
- Hydraulic medium : Mineral oil.
- Viscosity range : 10 cSt to 380 cSt.
- Fluid temperature range : -20°C to +70°C.
- Fluid cleanliness requirement : ISO 4406 20/18/15 or better.
- Nominal flow handling capacity :

Model	High Pressure Max.	Low Pressure Max.
PCM 20-16	100 l/min	160 l/min

Mass : Approx 10.5 kg.

Ordering code :



Note : Solenoid (refer spool type) and Subplate to be ordered separately.

