



COUNTER BALANCE VALVE

Model : CBS20 (30 Series)

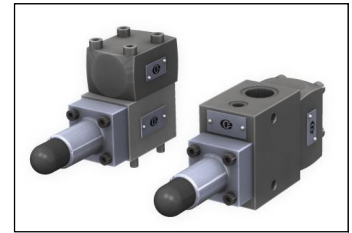
Ref. No. D 03449
Release: 01 / 2026

ENGINEERING - 1 of 3

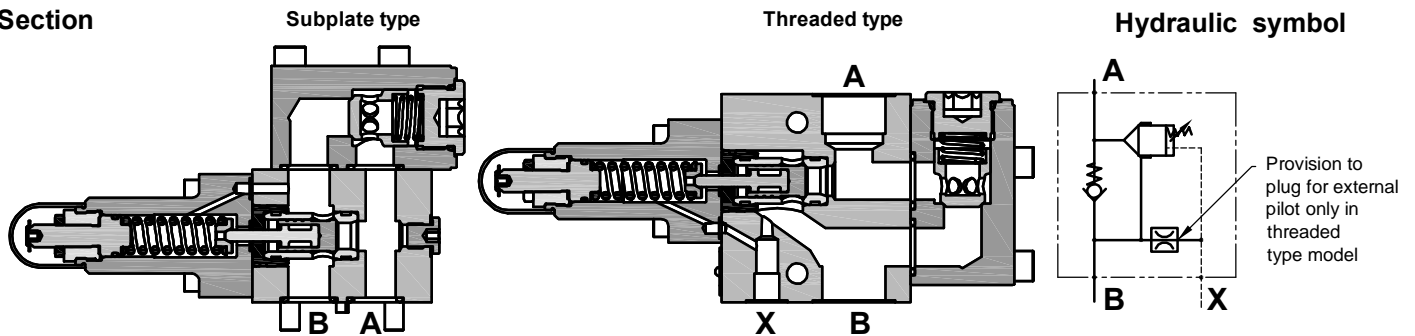
A Polyhydron Group Company

Description

Counter balance valves CBS20*** are seat type valves. These offer free flow from port B to Port A and give leak free closure in opposite direction upto a predetermined cracking pressure. The predetermined cracking pressure can be adjusted within its maximum specified range. For higher cracking pressure or external leakage drain, Port X can be used.



Section

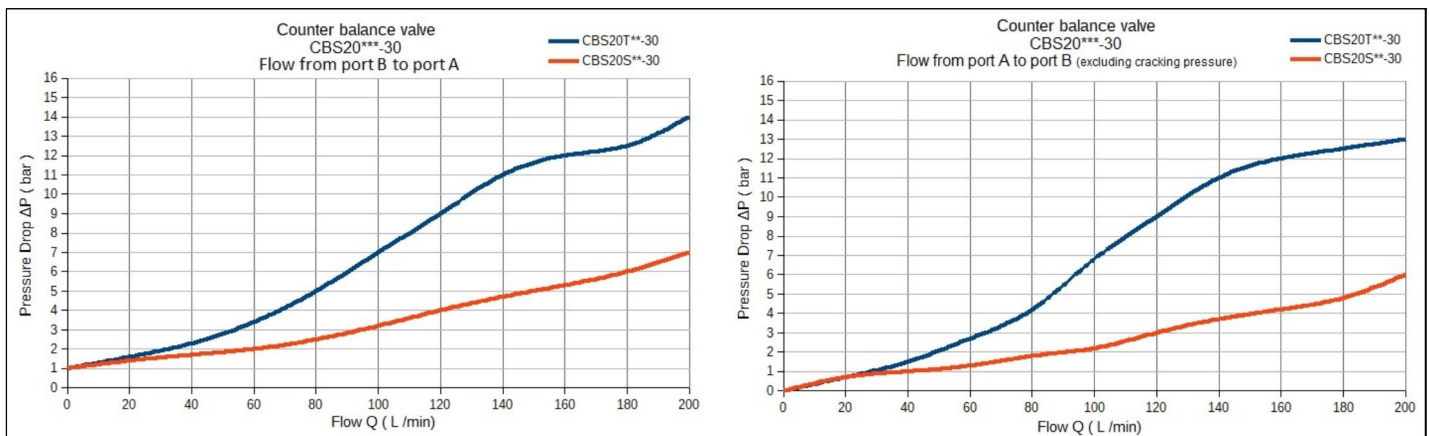


Technical specifications

Construction	:	Direct acting , Seat type.
Mounting style	:	Threaded port body and subplate body
Flow direction	:	Free flow from B to A Counter balance function from port A to port B.
Cracking pressure of counter balance function	:	Refer ordering code.
Working pressure	:	315 bar for all Ports.
Hydraulic medium	:	Mineral oil.
Temperature range	:	-20°C to + 80°C.
Viscosity range	:	10 cSt to 380 cSt.
Fluid cleanliness required	:	ISO 4406 20/18/15 or better.
Max. flow handling capacity	:	200 l/min max.
Mass approx.	:	Model CBS20T CBS20S
		in Kg. 8.6 6.9

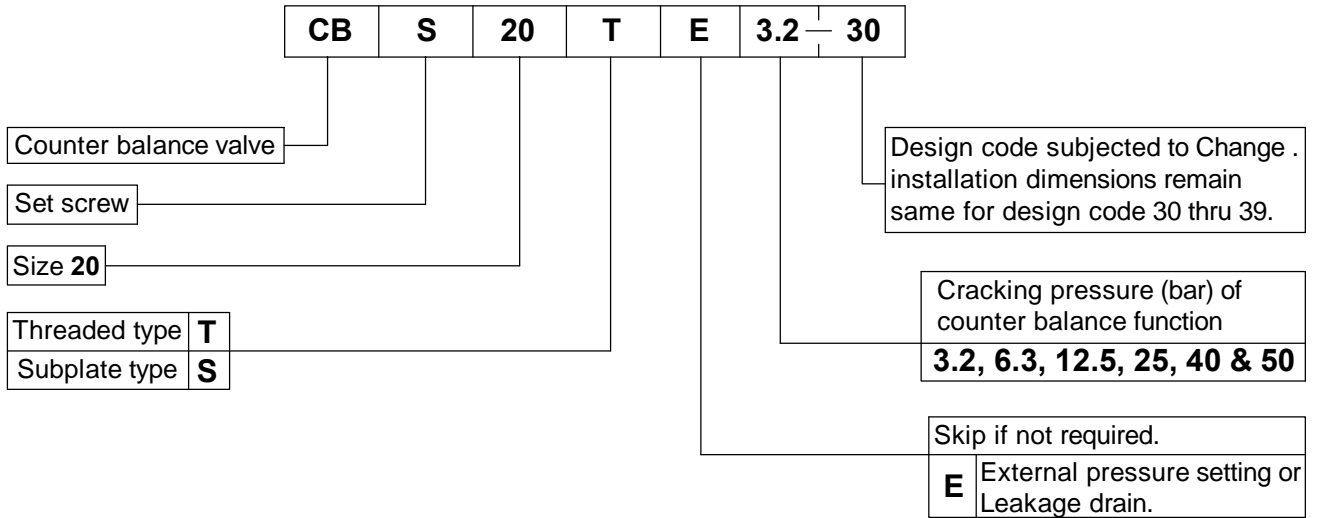
Performance graph

Oil grade used VG46 at 30°C





Ordering code



All rights reserved.
 Subject to change without prior notice.
 Due to continuous improvement in the design of the product, the actual product supplied may look different than shown above.
 For critical applications, please ask for certified installation drawing.