



A Polyhydron Group Company

DOUBLE PILOT OPERATED CHECK VALVE Model : 2CI10T

Ref. No. D 52200 B
Release 12 / 2025

ENGINEERING - 1 of 1

Description

Double pilot operated check valves series 2CI10T** provide pressure holding facility on service ports A1 and B1.

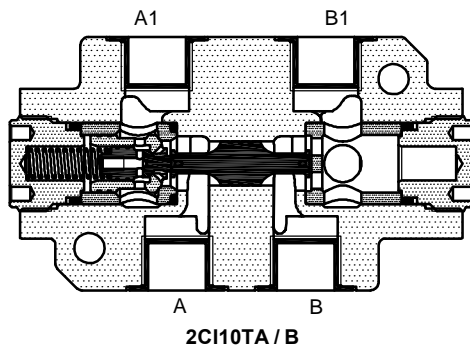
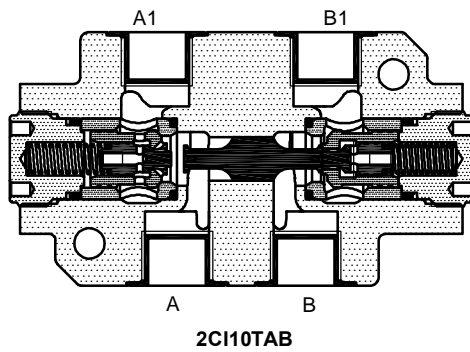
The valve opens and allows free return flow, when the other working port is pressurized.

The valve is not suitable for holding pressure on rod end side of Double acting cylinders, where ratio (Bore area : Annulus area) is equal to or greater than 3.5.

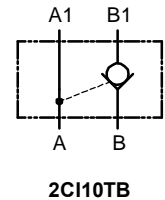
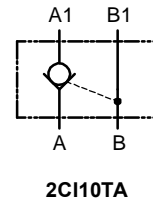
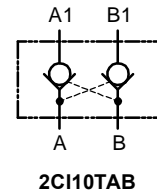
Three cracking pressures : 1, 3, 5 bar.



Section



Hydraulic symbol

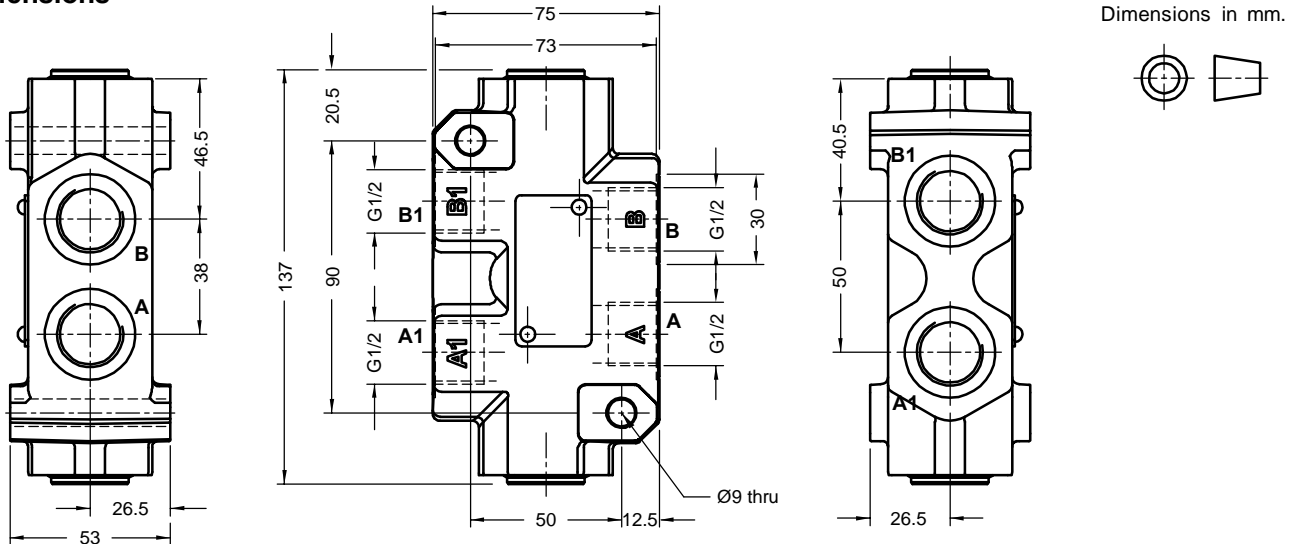


Technical specifications

Construction	:	Threaded, Seat type, Internally pilot operated.	
Mounting style	:	Factory standard.	
Mounting position	:	Optional.	
Flow direction	:	Free flow from A to A1 and / or from B to B1. Pilot flow in opposite direction.	
Cracking pressure	:	1, 3 or 5 bar.	
Working pressure	:	315 bar for all Ports.	
Area ratios	:	Pilot piston : Decomp. poppet = 3.5 : 1	
Hydraulic medium	:	Mineral oil.	
Temperature range	:	-20°C to + 80°C.	
Viscosity range	:	10 cSt to 380 cSt.	
Fluid cleanliness required	:	ISO 4406 20/18/15 or better.	
Flow handling capacity	:	Refer graphs.	
Mass approx.	:	Model	2CI10TAB 2CI10TA/B
		in Kg.	2.1 2

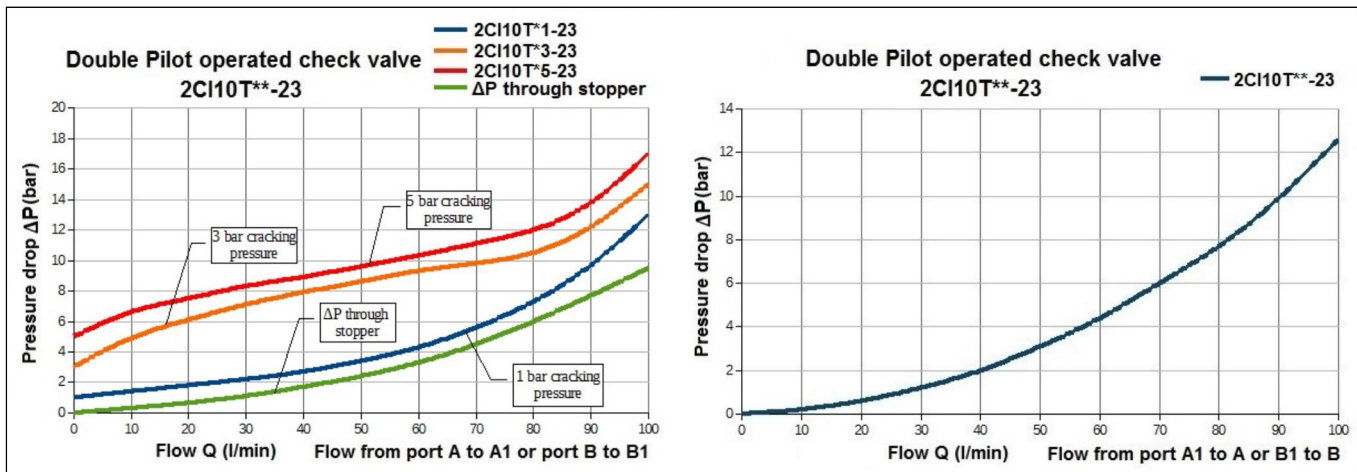


Unit dimensions



Note: Valve fixing S.H.C Screws are not in scope of supply.
Tightening torque for M8x1.25 S.H.C Screws is 39 Nm.

Performance graph



Ordering code

2CI	10	T	A	1	25
------------	-----------	----------	----------	----------	-----------

Double Pilot operated check valve

Size 10

Threaded body **T**

Pilot optd. check facility	
On A & B ports	AB
On 'A' port only	A
On 'B' port only	B

Design code subjected to Change. installation dimensions remain same for design code 20 thru 29.

Cracking pressure	
1	1.0 bar
3	3.0 bar
5	5.0 bar

All rights reserved.
 Subject to change without prior notice.
 Due to continuous improvement in the design of the product, the actual product supplied may look different than shown above.
 For critical applications, please ask for certified installation drawing.